



## **A Successful Business Starts With A Successful Team.**

Build an incredible workplace and grow your business with the Pro People, an all-in-one platform for HR management.

## **What is Pro People?**

Pro People is curated and crafted by a team of HR experts, who have notified all the issues faced by an HR operative.

This management platform is crafted in a way where it provides visibility in your operations on a real-time basis.

With Pro People you can view your operations and employee details holistically and identify necessary opportunities for collaboration & optimization across your Enter-

# STREAMLINE ALL YOUR HR PROCESSES INTO ONE PLATFORM



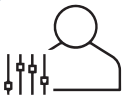
## Recruitment & Onboarding

An AI Based CV Parsing & Stack Ranking system that features a unique applicant tracking system to create a personalized candidate portal to digitally send & accept offer letters.



## Talent Management

With this module, you can track and improve the performances of any employee in your office. Continuous Feedbacks, Succession & Merit Planning makes the process simple.



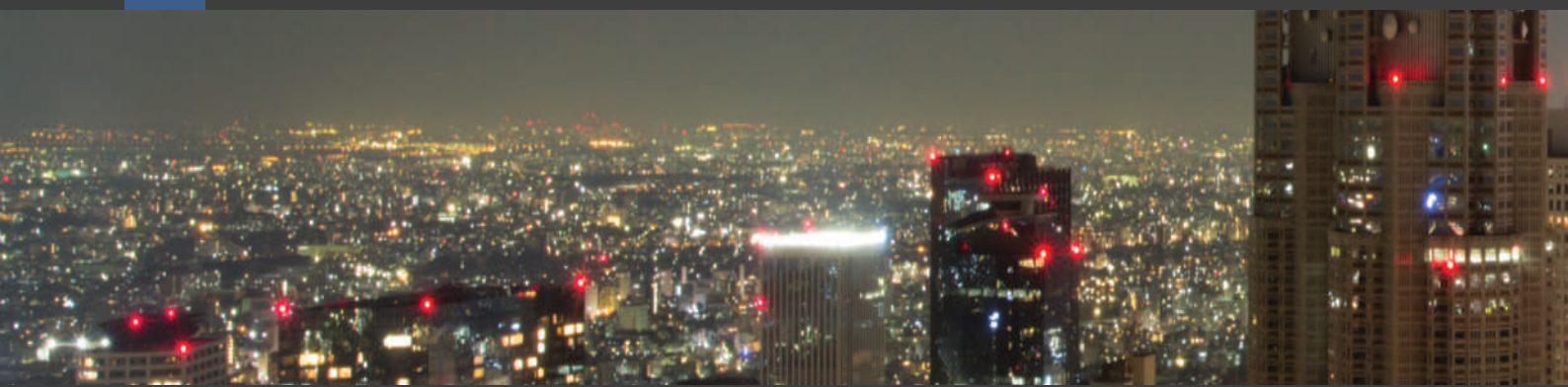
## Core HR

The complete HR control module that aids HR executives in creating organization & functional structure, custom workflows, permissions & access control and also individual employee tracking data.



## Time & Attendance

The most crucial part to track in any organisation. Well, this module makes it look really easy, with built-in open API's you can integrate this module into your existing RFID or Biometric devices. It is jam-packed with features like Geo Tagged & Geo Fenced Attendance, Personalized Shifts, Policies, & Weekly Offs making it suitable for any situations.





## Payroll & Expenses

An automated module that does all the payroll and expenses reports all by itself, the only manual work would be the QA part. The salary payroll gets calculated according to the employee's salary, permitted leaves, permissions, advances, loans and much more. The module can be customised according to the policies.



## Employee Engagement

This module ensures that all your employee's reasonable queries are met and the raised issues are sorted out. Employees are as important as customers. With this module, you can pulse surveys / Polls, an enterprise-wide social network for news updates and events, an organization calendar and much more.



## People Analytics

A module ideal for HRs and Managers to gain knowledge over any individual employee. The various reports showcase the various feedbacks and reports on an individual for better making decision. Reports include role reports, a visual dashboard on performance, time and attendance report and much more.



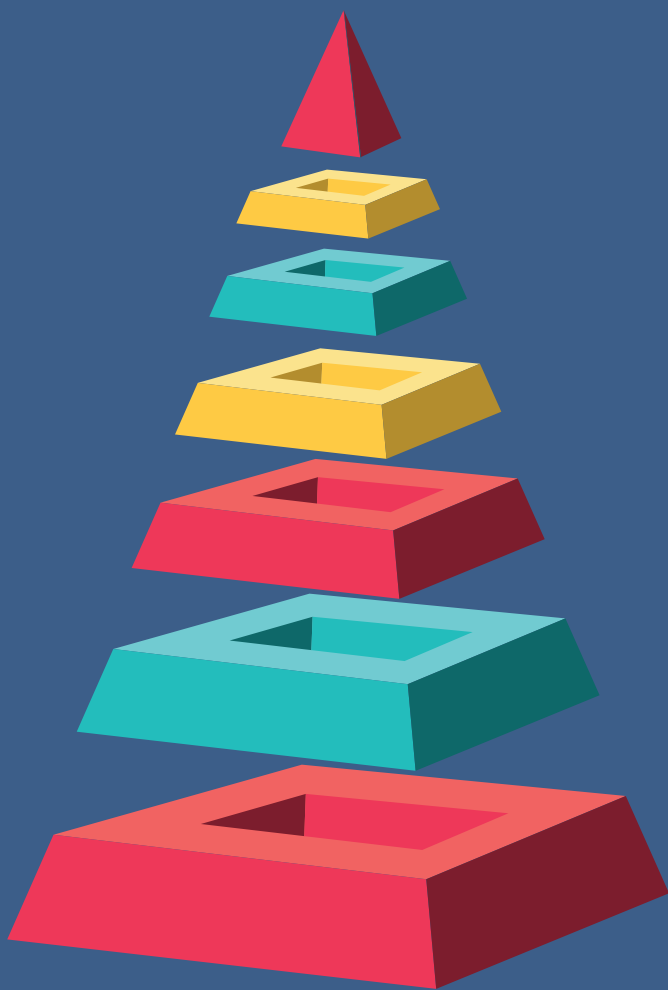
## Help desk







The help desk module is crafted to create an Internal HR Ticketing System that aids to resolve issues and manage SLA's within the organization. This also helps to assign tickets and queries based on their roles.





# Key Benefits of Pro People - An Enterprise-wide measurement system, where time and performance is key



-  **Accessibility**
-  **Visibility**
-  **Quick Implementation**
-  **Seamless Integrations**
-  **Drive Effective Strategies**
-  **World-Class Data Security**
-  **Improve Work-Life Balance**